



Aastra 7400 IP Terminals

Lift-up your IP communications system

Aastra 7400 IP terminals are a new series of terminals, designed with quality and esthetics in mind, while offering full support for Aastra communications systems.

Drawing from our extensive experience in terminal design and combined with thorough end-user research, we have taken terminals yet another step forward in delivering world-class usability and efficiency. The terminals are suitable for any office and general enterprise environment providing optimal support for features implemented in our advanced communication systems. Management of the terminals is an integrated part of the system. Thus backing-up user configuration and telephony data is just as simple as the automatic upload of new Aastra 7400 IP phone software.

Aastra 7400 IP Terminals

The Aastra 7400 IP series with its sophisticated and ergonomic design, offers a user-friendly graphical interface for an unparalleled user experience. The total integration with Aastra call managers and the auto-provisioning feature integrated in the Aastra 7400 series will contribute to a low total cost of ownership for the complete communications system.

To match the various customer needs, there are four different phone models in the Aastra 7400 IP series:

✦ **Aastra 7433ip** is an entry-level business IP phone, easy to use with an intuitive user-interface that includes graphical menu support.

✦ **Aastra 7434ip** is the flexible office version. This phone has a traditional flat position and a tiltable display, as well as a number of programmable function keys and speed dial buttons. To further strengthen the flexibility, the phone can be supplemented with extra key panels.

✦ **Aastra 7444ip** is a business IP phone. It has a large tiltable color display for flexible and powerful information handling as well as a completely new GUI. The usage of soft keys makes this phone ideal in free-seating environments.

✦ **Aastra 7446ip** is the most advanced version in the Aastra 7400 IP terminal series. Equipped with a large color display with touch screen support, the phone enables a new way of working. Aastra 7446ip terminals have an up-right position for easy display viewing and optimal touch screen display ergonomics.

Some key benefits

- Designed to deliver a superior voice quality with G.722 wideband codec and matching audio performance
- Acoustic echo cancellation (1)
- Dynamic jitter buffer
- Volume control (combined for handset, headset, loudspeaker, ring tone)
- Electronic hook-switch (DHSG) for wired and wireless headsets (Aastra 7434ip and Aastra 7444ip)
- Distinct blue LEDs for function keys and speed dial keys
- Dedicated headset port (1)
- Mute function
- Equipped with hearing aid support and acoustic shock protection
- Support for increased volume for users with impaired hearing
- My Dialog Contacts – End-user application for merging MS Office Outlook® contacts with the personal contacts in the phone
- Phone administration and management integrated in system management applications
- Integrated web server for central, remote and local support
(1) Applies to Aastra 7434ip, Aastra 7444ip and Aastra 7446ip

Security

Aastra 7400 IP terminals provide a high degree of security.

- Media and signaling encryption via TLS and SRTP
- General security authentication towards RADIUS server using IEEE 802.1X
- Individual authentication (end-user passwords)
- SSH ensures security for remote system administrator access

Upgradable

The software for the Aastra 7400 IP terminals can be automatically updated. If needed the phone will download the latest software from a defined web server. Automatic update ensures that the Aastra 7400 IP terminals in the system are always up to date with the latest software version.

Other Features

- Support for user mobility, free seating: log on/off
- Personal settings available when users log on to another telephone
- Speaker for monitoring, such as when using telephony services (for example: call center queue, interactive voice systems, news or weather forecasts)
- Excellent hands-free operation with full-duplex and wide-band voice support
- Emergency call support
- Branch office survivability support
- DNS SRV (service records)

Languages

Multi-language support, pre-loaded and selectable for end-user

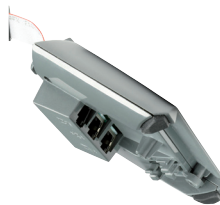
Accessories

- Extra key panels for Aastra 7434ip and 7444ip
- Optional unit with built-in 2-port Gigabit Ethernet switch T/TX and port for extra bell
- Country-dependant power adapters
- LAN cable

Option Unit (OPU)

Option Unit is integrated in the foot and available for Aastra 7433ip, 7434ip and 7444ip phone versions. Following functionality is supported:

- ✦ 2-port Gigabit Ethernet switch
 - 10M/100M/1000M Ethernet LAN switch (auto)
 - User priority, 1-7, (VLAN) per port (phone, PC)
 - 802.1X with or without VLAN
 - Different VLAN for phone and PC
 - Switch on/off VLAN tagging for traffic originating in the PC
 - Full duplex or half duplex (auto)



- ✦ Extra bell and busy lamp

- ✦ OPU parameter control via the phone

Option Unit (OPU)

Supported system versions

| Telephony System | Minimum version requirements | | |
|------------------|------------------------------|-----------------|---------------|
| | Aastra 743xip | Aastra 7444ip | Aastra 7446ip |
| MX-ONE TSE | Version 3.2 SP2 | Version 4.1 SP1 | Version 3.0 |
| TSW | Version SP6 | Version SP7 | Version SP1 |
| BusinessPhone | Version 9.0 | Version 9.0 | Version 8.1 |
| MD Evolution | Version 11.0 | | Version 11.0 |

Aastra 7433ip & Aastra 7434ip



Aastra 7433ip

Aastra 7434ip

Display

- Graphical display
- 1,000 personal contacts (phone book)
- Call list with 50 latest incoming and outgoing calls
- The angle of the Aastra 7434ip display can be adjusted for user convenience

Aastra 7444ip



Display

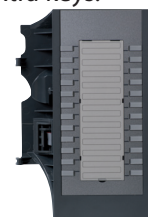
- Graphical color display, 3,5"
- 1,000 personal contacts (phone book)
- Call list with 50 latest incoming and outgoing calls
- The angle of the Aastra 7444ip display can be adjusted for user convenience

Extra key panels for Aastra 7434ip and 7444ip

There are two different extra key panel options: Key Panel Unit (KPU) and Display Panel Unit (DPU). The phones can be equipped either with up to three KPUs providing 72 extra keys, or with up to two DPUs, providing 48 extra keys.



Display Panel Unit (DPU)



Key Panel Unit (KPU)

Power to the modules is supplied by the terminal. Each extra panel unit has 24 additional keys. Extra keys can be programmed locally via the terminal (from a PC via the terminal's web server) or centrally via the management application suite. The DPU has self-labeling keys to enable centrally stored name/number information to be displayed on the panel. This, of course, means that with the free-seating function, individual user data with name/number information will be displayed on the terminal and the DPU as soon as the user logs in.

Aastra 7446ip (Dialog 5446)

The large, color, touch screen display offers features such as context sensitive telephony information, web browsing and self-labeling keys to present contacts, call status, buddy lists, etc. The menus are icon-based, making navigation both easy and intuitive. With navigation via icons instead of text commands, the Aastra 7446ip is a revolution in user-friendliness and efficiency. The user interface offers a new generation of intuitiveness and ease-of-use, and with the model's similarity to smart phones, the learning process goes quickly. Ease-of-use is what enables the phone and all of its features to be utilized to their full potential, bringing considerable increases in efficiency. A Gigabit Ethernet switch (plug-in unit) allows for almost unrestricted bandwidth access for a PC linked to a LAN via the Aastra 7446ip phone.



Display

- Graphical 4.3-inch color
- Touch screen
- Dynamic and content sensitive windows-oriented user interface
- Internet browser (XML)
- Pre-selected and programmable features with touch screen buttons
- Two pages with programmable speed-dial keys and touch screen buttons
- Corporate directory/ central phone book
- 1,000 personal contacts (phone book)
- Call log list with 50 latest incoming and outgoing calls

| Technical specifications | Aastra 7433ip and 7434ip | Aastra 7444ip | Aastra 7446ip |
|----------------------------------|---|---|---|
| Regulatory Compliance | | | |
| Acoustic shock protection | ETS 300 245-2 | ETS 300 245-2 | ETS 300 245-2 |
| Hearing aid compatibility | ITU-T P.370 (8/96) and FCC; Part 68, subpart D American | ITU-T P.370 (8/96) and FCC; Part 68, subpart D American | ITU-T P.370 (8/96) and FCC; Part 68, subpart D American |
| EU RoHS Directive | 2002/95/EC | 2002/95/EC | 2002/95/EC |
| EMC | EN 55 022 Class B, FCC part 15 | EN 55 022 Class B, FCC part 15 | EN 55 022 Class B, FCC part 15 |
| Power | | | |
| Power over Ethernet IEEE 802.3af | Class 1, dynamic | Class 2, dynamic | Class 3 |
| Power adapter | Input 100-240 V AC, Output 5 V DC | Input 100-240 V AC, Output 5 V DC | Input 100-240 V AC, Output 24 V DC |
| Average phone power consumption | 10/100 Mbit Ethernet, 2 W | 10/100 Mbit Ethernet, 2,9 W | 10/100 Mbit Ethernet, 3,7 W |
| DPU/KPU average consumption | 0,1 W / unit* | 0,1 W / unit | - |
| Gigabit Ethernet Switch | max 2,1 W | max 2,1 W | max 2,4 W |
| Power Off button | Yes* | Yes | - |
| Power save mode | Yes | Yes | Yes |
| Display | | | |
| Display type | B&W, graphical | Color, graphical | Color, graphical |
| Touch screen | - | - | Yes |
| Backlight (White) | Yes* | Yes | Yes |
| Tiltable | Yes* | Yes | Yes |

| Technical specifications | Aastra 7433ip | Aastra 7444ip | Aastra 7446ip |
|--|--------------------------------|--------------------------------|--------------------------------|
| Environment | | | |
| Operating temperature: | +5 to +45 °C | +5 to +45 °C | +5 to +45 °C |
| Storage temperature: | 0 to +70 °C | 0 to +70 °C | 0 to +70 °C |
| Relative humidity: | 5 to 90 % | 5 to 90 % | 5 to 90 % |
| General Specifications | | | |
| Size (l x w x h) | 220x175x85 | 220x185x85 | 320x225x160 |
| Weight, material (g) | 800 | 855 | 1,100 |
| Product color | Dark grey | Dark gray | Dark grey/light grey |
| Supported Codecs | | | |
| Voice Codecs | G711, G.729a, G.729ab, G.723.1 | G711, G.729a, G.729ab, G.723.1 | G711, G.729a, G.729ab, G.723.1 |
| Wideband | G.722 | G.722 | G.722 |
| Phone book | | | |
| Name length entry | 24 characters | 24 characters | 24 characters |
| Number length entry | 24 digits | 24 digits | 24 digits |
| Entries | 1,000 | 1,000 | 1,000 |
| Keys | | | |
| Line keys | 3 | 3 (soft-keys) | 3 (touch-keys) |
| Display navigation keys | 2 | 2 | 1 (5 functions) |
| Volume keys | 2 | 2 | 2 |
| Function keys with indication | 5 | 8 | 7 |
| Mute key | Yes | Yes | Yes |
| Speaker phone key | Yes* | Yes | Yes |
| Telephone settings key | Yes | Yes | Yes (touch-key) |
| Clear key | - | - | Yes |
| Clear/Reset key | Yes** | Yes | - |
| Clear/Reset/Off key | Yes* | Yes | - |
| Monitor loudspeaker key | Yes** | Yes | - |
| Programmable keys (indicators) | 8* | 8 (80 total on 10 pages) | 20 |
| Web browser key | - | - | Yes (touch-key) |
| Message waiting | Yes | Yes | Yes |
| Additional features and functions | | | |
| Wall mount | Yes | Yes | - |
| Different ring signals for different calling persons | Yes | Yes | Yes |
| Full duplex hands-free/loudspeaker mode | Yes* | Yes | Yes |
| Headset mode / LED key | Yes* | Yes | Yes |
| Support for wireless headset DHSG standard | Yes* | Yes | - |

* - valid only for Aastra 7434ip

** - valid only for Aastra 7433ip