

For other languages, please scan the following QR code

- Bitte scannen Sie den QR-Code, um das deutsche Handbuch, das Installationsvideo und die Funktionseinführung zu erhalten
- Escanee el código QR para obtener el manual en español, el video de instalación y la introducción de la función
- Veuillez scanner le code QR pour obtenir le manuel en français, la vidéo d'installation et l'introduction des fonctions
- Отсканируйте QR-код, чтобы получить руководство на русском языке, видео по установке и описание функций
- Scansionare il codice QR per ottenere il manuale in italiano, il video di installazione e la guida alle funzionalità. Video di installazione e funzionalità
- Leia o código QR para obter o manual em português, o video de instalação e a introdução das funções
- Zeskanuj kod QR, aby uzyskać instrukcje, filmy instalacyjne i funkcje

من فضلك قم بمسح رمز الاستجابة السريعة (QR-code) للحصول على دليل المستخدم باللغة العربية وفيديو التثبيت ووصف الوظائف



请扫描二维码获取中文的说明书、安装视频及功能介绍

Welcome

Thank you for your purchase. Akubela always made high-quality products with our high-end technology, high-quality craftsmanship, safe and reliable materials. The new radiator thermostat will bring you a more comfortable smart life . Please read this installation/ programming manual for installing and operating. Please also make sure someone qualified to install the radiator . Comply with all local regulations.

FEATURES

1. LED display, no window, wider perspective
2. Colorful display
3. Graceful arc waist shape
4. Rubber stretch paint, feel like baby skin
5. Night Halo colors your home
6. Low power consumption, battery can last 1 year for normal use and standby for 2 years.
7. Low battery tip
8. Diagram of temperature curve added in APP
9. Vary colors are available like white, Black, gray etc.

IN THE BOX YOU WILL FIND

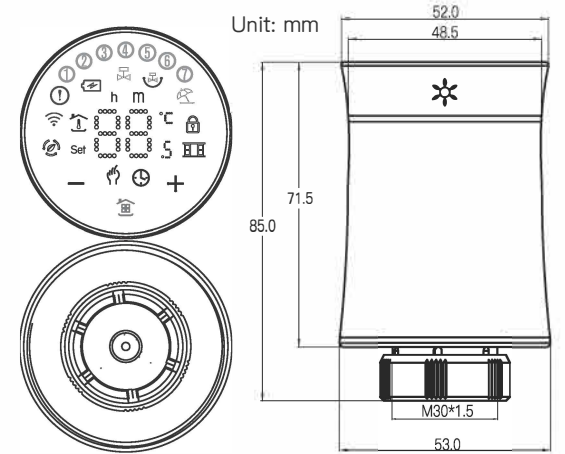
Raditor Thermostat	1pc
User Guide	1pc
RA Adapter	1pc
RAV Adapter	1pc
RAVL Adapter	1pc
Comap Adapter	1pc
T+A Herz Adapter	1set
Herz Adapter	1pc

Special note: The Zigbee version of the temperature control valve should be used with a Akubela Zigbee gateway.
The package does not include the battery and gateway.

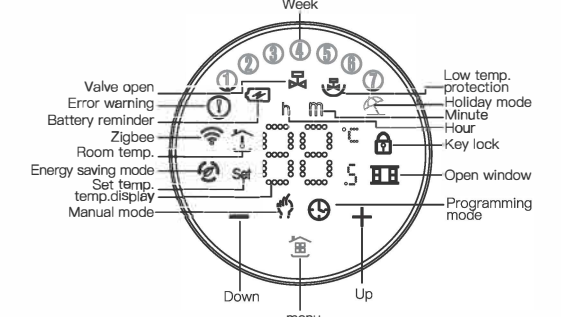
APPLICATION



DIMENSION



HOME SCREEN QUICK REFERENCE



TECHNICAL DATA

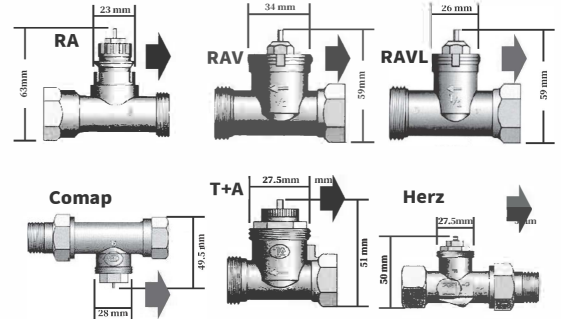
Power Supply: 3 V, 2xAA Batteries, Packaging not have battery.
Maximum stroke: 4.5mm.
Accuracy: $\pm 0.5^{\circ}\text{C}$
Set Temp. Range: 5~45 $^{\circ}\text{C}$
Display temp. Range: 0~70 $^{\circ}\text{C}$
Ambient Temp.: 0 ~ 45 $^{\circ}\text{C}$
Ambient Humidity: 5 ~ 95 % RH (Non Condensing)
Storage Temp.: -5~ 45 $^{\circ}\text{C}$
Timing Error: < 1%
Protection Class: IP 20
Buttons: Capacitive Touch Buttons
Frequency Band: 2.405~2.480GHz
Maximum Radio Transmit Power: <+10dBm
Memory space: 32KB flash
256 bytes internal RAM, 2K bytes external RAM

Before installing

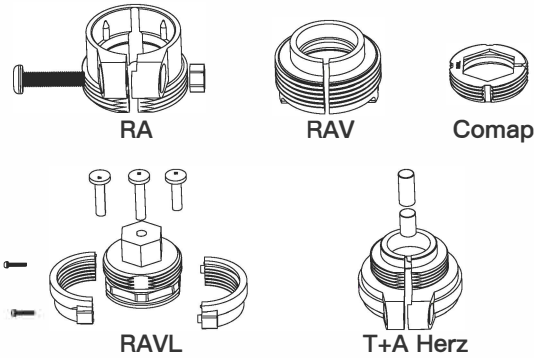
To avoid damages to the product during installation, please read the manual carefully before installing TRV .

INSTALLATION

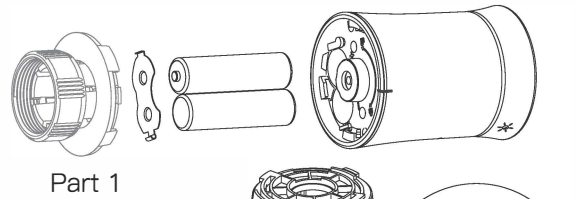
Step 1: Select the adapter. TRV is usually connected with M30*1.5mm valve. If you have different valves, please determine your valve type according to the picture below, and choose the correct adapter from the package. If you do not find the valve that matches your use in the picture below, please buy it carefully.



Step 2: Install the adapter. Install the adapter on your valve as the picture below. If you don't need an adapter, please ignore this step.



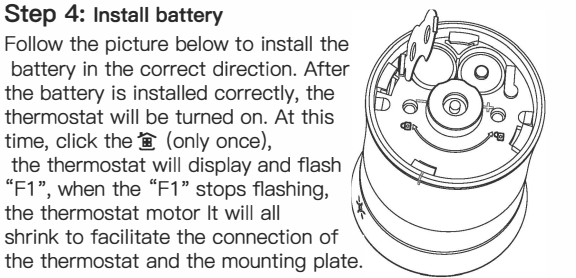
Step 3: Install the thermostat mounting plate. Remove the mounting plate of the thermostat (Part 1 in the picture below) counterclockwise.



Follow the instructions in the figure below to install the mounting plate on the valve. Pay attention to the red label in the picture.

Step 4: Install battery

Follow the picture below to install the battery in the correct direction. After the battery is installed correctly, the thermostat will be turned on. At this time, click the (only once), the thermostat will display and flash "F1", when the "F1" stops flashing, the thermostat motor It will all shrink to facilitate the connection of the thermostat and the mounting plate.



Step 5: Connect the thermostat and the mounting board When "F1" stops flashing, find the "mark point" of the thermostat, shown Fig. 1. Turn clockwise to complete the connection between the thermostat and the mounting plate. After clicking the (only once), the thermostat will display "F2". When "F2" disappears, while the screen remains on, turn the thermostat clockwise to adjust the screen to your liking direction.

Installation finished.

OPERATION

1. Power: After installing the battery, it will automatically turn on. It can't be turned off till the battery is removed. When the TRV is turned on, it will enter the self-check program, and all icons will be displayed firstly. Press , the screen flashes "F1", indicating that the temperature control valve is shrinking; when "F1" stops flashing, press again, The screen displays "F2", Indicates that the temperature control valve is measuring.; when the screen displays the room temperature, it indicates that the temperature control valve has completed the stroke measurement, and you can start using the temperature control valve normally.

2. Mode selection

Press to switch between manual, programming, vacation modes.

Manual mode – In this mode, the device executes manual temperature setting. When the set temperature is lower than the "minimum temperature", the valve is closed (forced closed);

Programming mode – In this mode, the device executes a preset week programming temperature time and temperature;

Holiday mode – In this mode, for example, the vacation mode is set for 10 days and the temperature is set to 15 degrees Celsius. After 10 days, the device will automatically switch to programming mode;

Temporary manual mode – In this mode, icon will flash. At this time, the device executes the manually set temperature and returns to the weekly programming mode in the next time period.

3. Set the temperature

Press "+" / "-" key to adjust the temperature

4. Set the clock

Press and hold for 3 seconds, the screen will display "h" and numbers, indicating that the hour is being set, set the hour by press "+" / "-" keys; press again, the screen will display "m", indicating that the minute is being set, press "+" / "-" keys to set the minutes; press again, the screen will display "number", indicating that the day of the week is being set, and the day of the week can be set by "+" / "-" ;press again, the screen will flash "number, h, m", indicating that the number of days in the vacation mode is set, which can be set by the "+" and "-" keys;

5. Lock your Radiator

Press the "+" and "-" keys together for 3 seconds to lock or unlock the keys.

6. Low voltage reminder

When the voltage is lower than 1.8V, the screen will display .

7. Boost heating

Press and hold "+" for 3 seconds, the device will enter the boost heating mode, and the will flash. The countdown will be displayed in the APP.

8. Adjusting/Setting the Programmable Schedules

Method one;

Manually set a week of programming settings, specific operations are as follows:

Method Two;

Use APP for one week of programming settings, please refer to the second page "Programming your Radiator"

Manual editing:

Press and hold for 3 seconds. When you see the flashing numbers on the screen, press 4 times to skip the clock setting. When the screen displays "12345" (means Monday to Friday), flashing numbers and "h", you can set the hour with "+" and "-"; press again, flashing numbers and "m", you can use "+" "-" Set the minutes; press again, the screen displays "Set", and the temperature can be set by "+" "-". This completes the setting of the programmed temperature for one week in the morning from Monday to Friday.

By analogy, refer to the one-week programming temperature default table to complete one-week programming settings.

8. Programming setting

Time display	MON.–FRI. (①②③④⑤ shows on screeen)		SAT. (⑥shows on screeen)		SUN. (⑦shows on screeen)	
	TIME	TEMP.	TIME	TEMP.	TIME	TEMP.
Period 1	6:00~11:30	20	6:00~12:00	24	6:00~12:30	19
Period 2	11:30~13:30	21	12:00~14:30	23	12:30~14:30	20
Period 3	13:30~17:30	22	14:30~17:30	22	14:30~18:30	21
Period 4	17:30~6:00	23	17:30~6:00	21	18:30~6:00	20

9. Setting the Functions and Options

Press and hold the "-" and 3 seconds together , entering into the advanced option settings. The screen displays "A1" (function), after 2 seconds, the number (settings and options) will display, and the options can be set by the "+" / "-" key.

Code	Function	Setting and options	Default
A1	Temperature compensation	-9℃ ~ 9℃	-2
A2	Open window detection (After the valve is opened, the room temperature is 5≤N℃, every 5 minutes, check whether the room temperature is lower than the previous detection by ≥3℃)	00: close 01: open	00
A3	When A2 is set to "01", the device detects whether the room temperature has dropped by N℃ compared with the previous time	N: 5-25℃	5
A4	When A2 is set to "01", close the valve time	5-60min	15
A5	Min.temp.	5-15℃	5
A6	Max.temp.	15-35℃	35
A7	Forced heating countdown	100-900s	300 (screen display 30s)
A8	Detection valve head opening	Open: ON Closed: OF	Can only show
A9	Dead zone temp.	0.5-5℃	1
AA	Energy saving mode	00: close 01: open	00
AB	Energy saving mode temperature	5-35℃	20
AC	Low temp. protection	0-10℃	5
AD	Standby screen brightness	0-9	00
AE	Factory reset	00: do not reset 01: reset	00
AF	version number		U1

10. Command priority

Priority judgment: In manual mode, Set to force close> Start low-temperature protection to force opening > Test window-opening to force closing > Boost heating

11. CE standard

EMC, LVD,RF,ROHS

Common Abnormity and Processing Method

Error reminder	Failure description	Solution
① icon+screen display E1	The temperature sensor is disconnected orshort-circuited	Contact seller for replacement
"Exclamation mark" icon + screen flashing E2	The thermostat cannot detect the stroke	Reinstall the battery to release
🔋 icon	Battery voltage is lower than 1.8V	Replacement battery

About Zigbee

Step 1 Download your APP

① Download BelaHome App on App store.



Step 2 Connect the temperature control valve

Check the tutorial below to complete the connection and setup.

Long press “-” for 3s, as shown in the figure below (Fig. 3), the “Zigbee” icon will flash on the screen(Fig. 4).

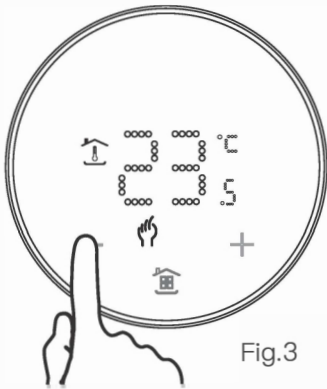


Fig.3

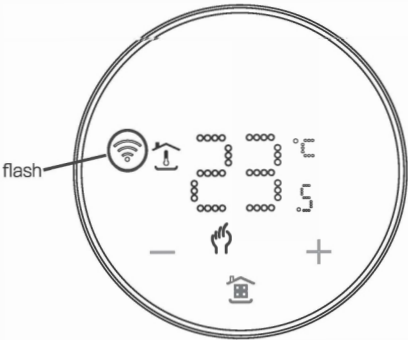


Fig.4