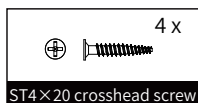
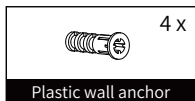
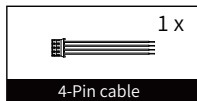
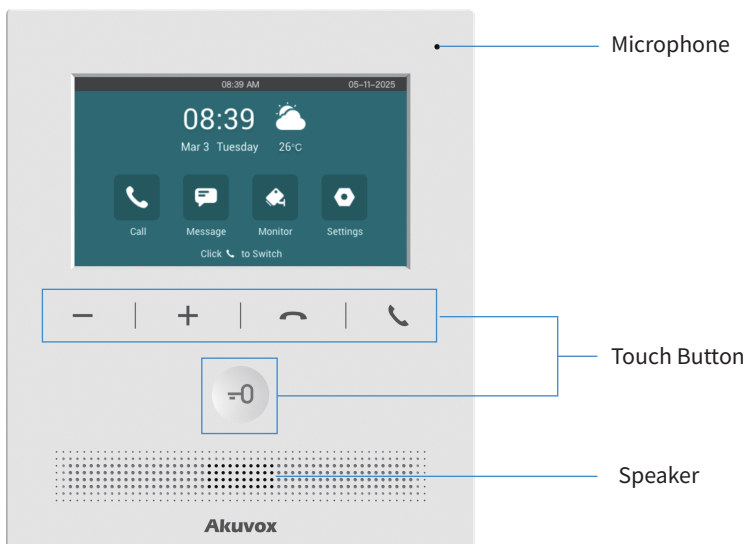


## Unpacking

Before using the device, check the device model and ensure that the shipped box includes the following items:



## Product Overview



## Before You Start

### Tools needed

(not included in shipped box)

- Cat Ethernet Cable
- Crosshead Screwdriver
- 5mm Electric Drill

### Voltage and Current Specifications

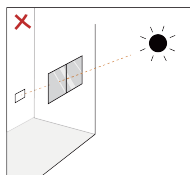
- It is suggested that use PoE or 12VDC 1A power adapter to power on device.

### AWG Sizes and Properties Table

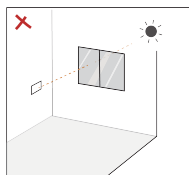
Power Supply	12VDC 1A				
AWG	16	18	20	22	24
Resistance (ohm/km)	13.5	21.4	33.9	48.5	79.6
Cross-sectional Area (mm <sup>2</sup> )	1.318	0.8107	0.5189	0.3247	0.2047
Wire Length (m)	≤50	≤50	≤50	≤40	≤20

### Requirements

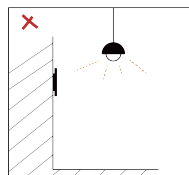
1. Place the device away from sunlight and light sources to prevent potential damage.
2. Do not place the device in the high-temperature, and humid environments or in surroundings impacted by magnetic field.
3. Install the device on the flat surface securely to avoid personal injuries and property loss caused by device's falling.
4. Do not use or place the device near heating objects.
5. Please keep device at least 2 meters away from light, and at least 3 meters away from window and door.



Direct sun  
through window



Indirect sunlight  
through window



Close to light

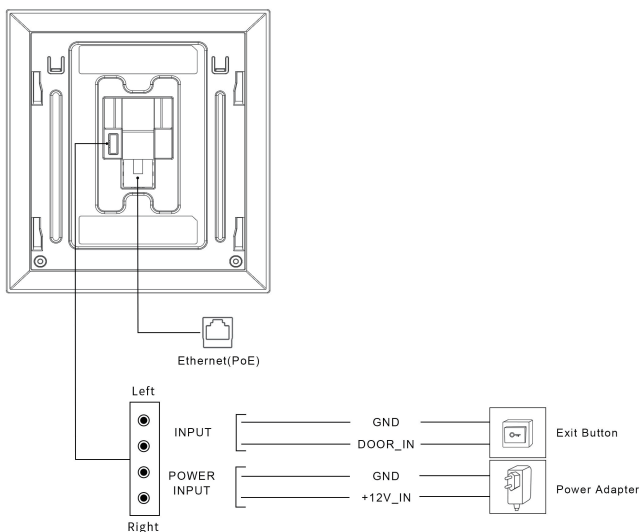
## Warning!

1. To ensure safety, avoid touching power cord, power adapter, and device with wet hands, bending or pulling the power cord, damaging any components, and use only qualified power adapter and power cord.
2. Be careful that standing up on the area under the device in case of personal injuries cause by hitting the device.

## Caution

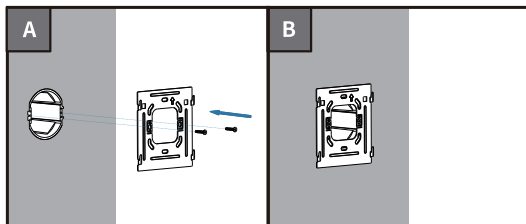
1. Do not knock device with hard objects.
2. Do not press down hard on the device screen.
3. Do not expose device to chemical products, such as alcohol, acid liquid, disinfectants, and so on.
4. To prevent the device installation from be coming loose, ensure accurate diameters and depths of screw holes, If the screw holes are too large, use glue to secure the screws.
5. Use wet cloth clean device surface softly, and then wipe the surface with dry cloth for cleaning the device.
6. If there is abnormal situation of the device, including uncommon sound and smell, please power off the device and contact Akuvox Technical Team immediately.

## Wiring Interface

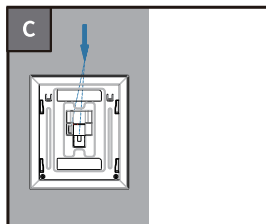


## Installation

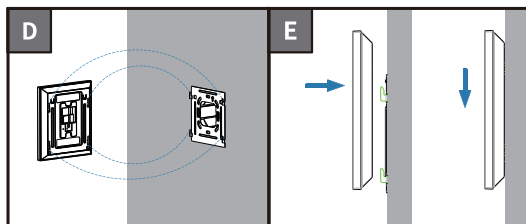
### 1. With a round embedded box in the wall



Use two **ST3x20 crosshead screws** to fix wall-mounting bracket on the round embedded box, ensuring the bracket is flush against the wall.

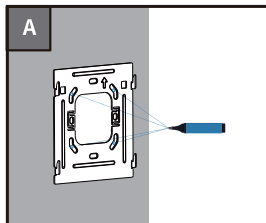


Connect all cables to the device and test the device functionality (for details, please refer to **Device Wiring** section).

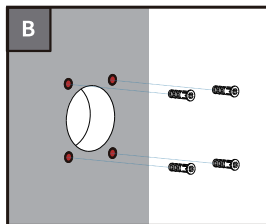


- As shown in the diagram, line up the holes on the back cover with the hooks on the bracket.
- Press the device into the bracket, and slide it to the bottom until it reaches the end.

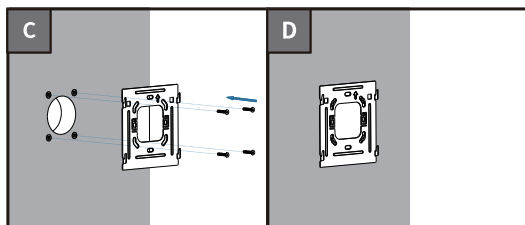
## 2. Without an embedded box in the wall



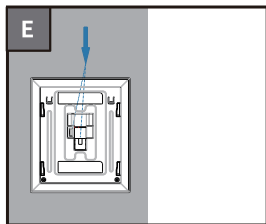
- Align the cable hole of the wall-mount bracket with the cable position.
- Mark the four fixing holes through the **wall-mounting bracket** on the wall.



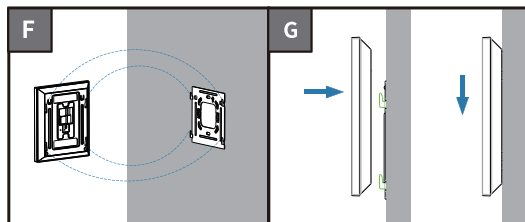
- Take down the **wall-mounting bracket**.
- Use an 5mm electric drill to make the four fixing holes in the wall marked before, each with a depth of 25mm.
- Insert the **plastic wall anchors** attached into the fixing holes.



Use four **ST3x20 crosshead screws** to fix wall-mounting bracket on the wall, ensuring the bracket is flush against the wall.



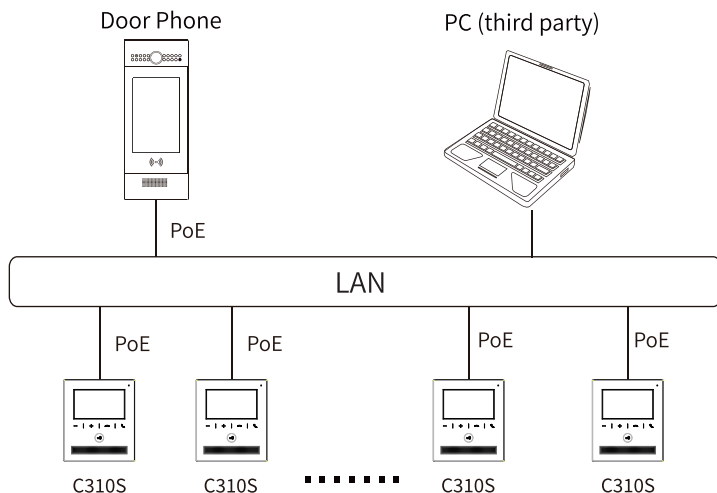
Connect all cables to the device and test the device functionality (for details, please refer to **Device Wiring** section).



- As shown in the diagram, line up the holes on the back cover with the hooks on the bracket.
- Press the device into the bracket, and slide it to the bottom until it reaches the end.



## Application Network Topology



## Device Test

Please verify the device status after installation:

1. **Network:** Press the **Dial Key** to navigate to **Settings > Advanced > Network**, and press the **Unlock Key** to confirm each selection. (To access the Advanced page, press the Unlock key four times consecutively.) Network is working properly if the IP address is obtained.
2. **Intercom:** Press the **Dial Key** and the **Unlock Key** to enter the call page, then select the corresponding device or contact to make a call. The call configuration is correct if the call is successful.
3. **Access Control:** Press **Unlock Key** on the monitor interface to unlock the door.

## Warranty

1. Akuvox warranty does not cover intentional mechanical damage or destruction caused by improper installation.
2. Do not attempt to modify, alternate, maintain, or repair device by yourself. Akuvox warranty does not apply to damages caused by anyone who is not representative of Akuvox or an Akuvox authorized service provider. Please contact Akuvox Technical Team if the device need to be repaired.

## Get Help

For help or more assistance, contact us at:



<https://ticket.akuvox.com/>



[support@akuvox.com](mailto:support@akuvox.com)

Scan the QR code to get more videos, guides, and additional product formation.



## Notice Information

Information contained in this document is believed to be accurate and reliable at the time of printing. This document is subject to change without notice, any update to this document can be viewed on Akuvox' s website: <https://www.akuvox.com> © Copyright 2025 Akuvox Ltd. All rights reserved.

