



WIS
www.ruijienetworks.com

WIS Cloud Solution

Ruijie | Wired & Wireless Intelligent Service

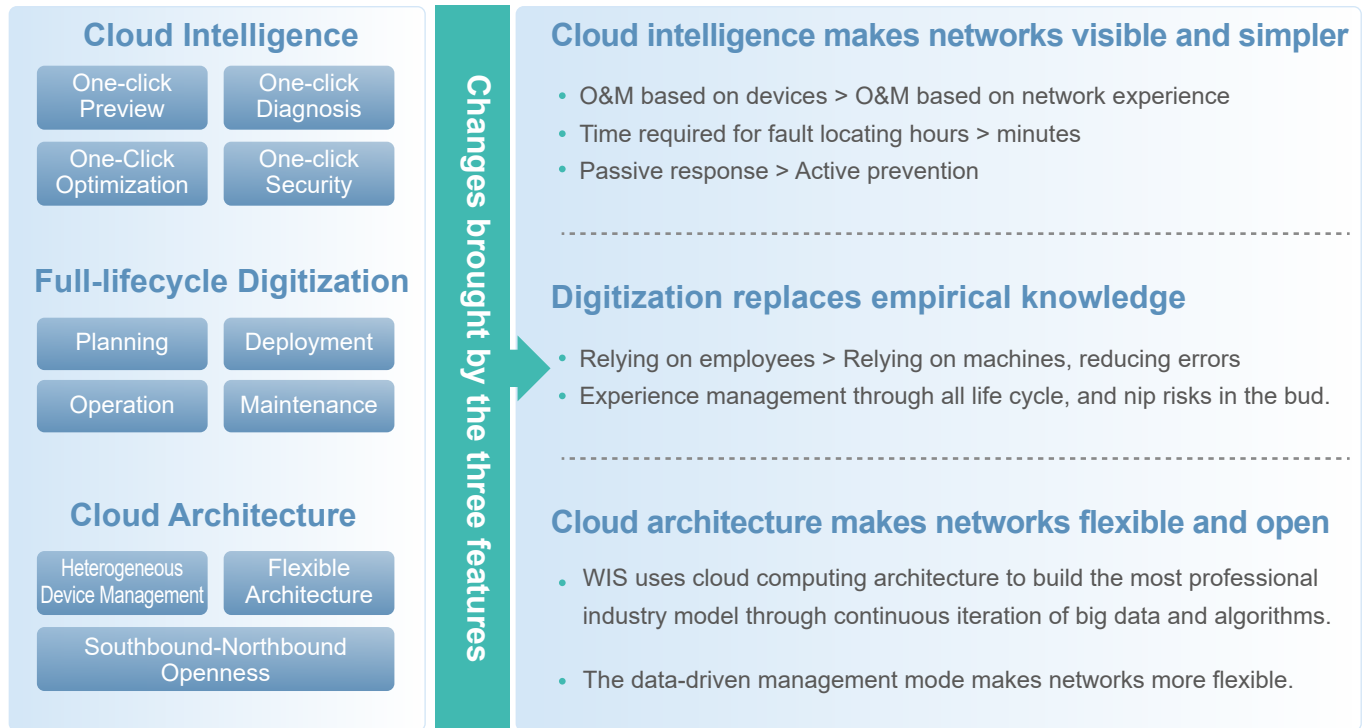


Scan To Konw More
About This Solution



| What Is WIS Cloud Solution

WIS (Wired & Wireless Intelligent Service) Cloud Solution provides full-lifecycle intelligent network services covering network planning, deployment, operation, and maintenance. Based on big data, cloud computing, and AI technologies, WIS cloud improves the efficiency of network construction and operation, maintenance and management of enterprises and partners, and facilitates the digital transformation of enterprises.



| WIS Cloud Solution

Device stability

100+ rule-based expert systems automatically check abnormal devices going online/offline, as well as configuration and version errors.

Signal coverage

Regardless of the environment changes, the network signal insufficiency risk is analyzed based on network terminal connection records.

Association stability

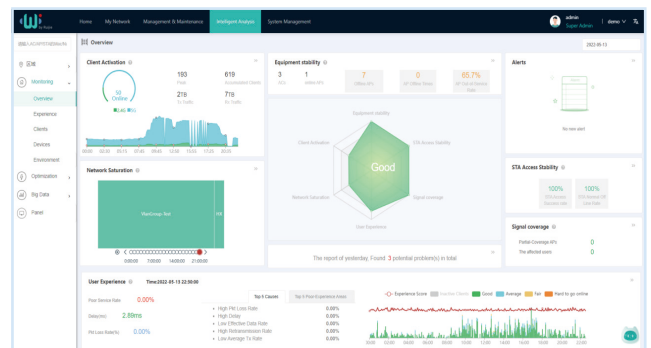
The wireless access success rate, abnormal disconnection, and roaming errors are detected.

User experience

Based on the delay, packet loss, signal strength, channel utilization and other indicators, through millions of groups of supervised AI training, terminal experience is classified into smooth, good, or poor.

Terminal activity/Network saturation

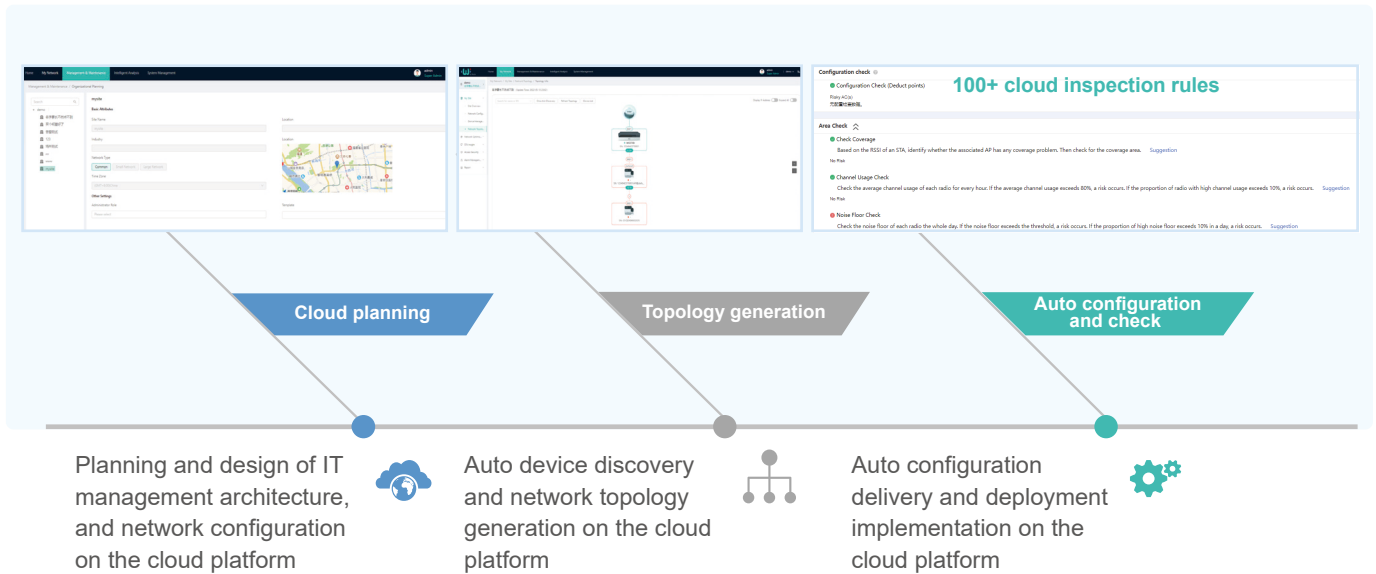
Risks requiring network expansion is analyzed based on the current user activity and network resource saturation.



Visualized and automatic inspection and optimization on the entire network promote efficient and trouble-free O&M.

Full Lifecycle

Planning and Deployment



On-site personnel do not need to have a technical background, and they can deploy the network within 10 minutes. The headquarters can deploy a network of 100 stores in one day, facilitating the rapid expansion of enterprises.

Operation & Maintenance

Breakdown
Global perspective > regional perspective > individual AP perspective > individual terminal perspective

From the five dimensions of coverage, interference, roaming, access, and authentication, existing problems are analyzed, and suggestions are provided.

Root Cause Analysis
In a wireless environment, a problem may occur due to weak signal, low rate, and interference. The factor analysis algorithm deduces the main cause from a problem symptom.

Enter the username MAC/IP address/username.

WIS can check 7x24 access records, a red mark indicates an error time and access AP.

Check the access failure at a time point.

WIS presents the packet interaction process.

WIS automatically analyzed that the DHCP OFFER was not responded to.

WIS automatically analyzed whether the issue is universal.

WIS prompts DHCP server error

Symptom

↓

Problem

↓

Cause

Cloud Intelligence

Optimization and Roaming

Network Optimization

Scenario selection

WIS provides different network optimization solutions for varied scenarios, such as high-density office, warehousing, dormitory, venue, and outdoor.

Global optimization

The user groups APs into different scenarios. Then, WIS automatically analyzes and generates optimization plans, delivers the configuration, and presents network effects before and after the optimization.

Real-time protection

The cloud and edge devices link for real-time monitoring, local optimization, and the optimal solution.

- Real-time monitoring of AP errors and active avoidance of interference
- Real-time monitoring of terminal roaming and active prevention

Smart Roaming

Poor quality prediction

The alignment of data including the terminal signal, delay, and packet loss predicts the possible risk of poor quality terminals.

Lossless induction

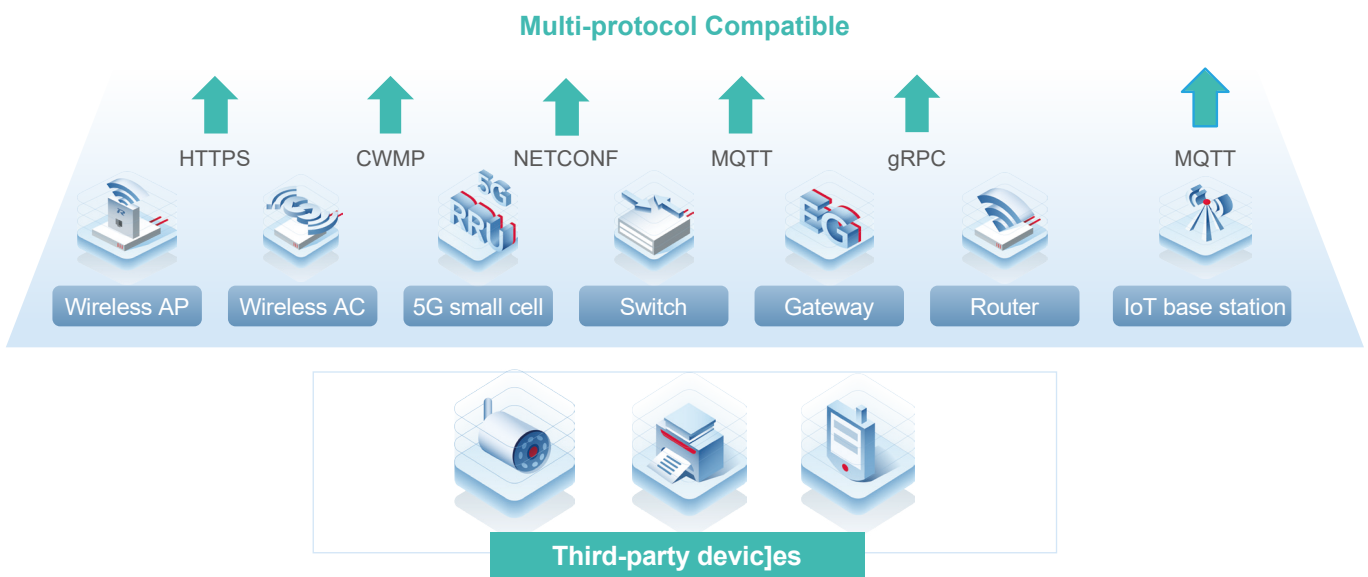
When a terminal is at the risk of poor quality signals, the neighbor AI Radio will monitor in real time for better choices, and try to induce roaming in a way that the terminal does not sense, so that the terminal can connect to a better AP in advance.

Continuous closed loop

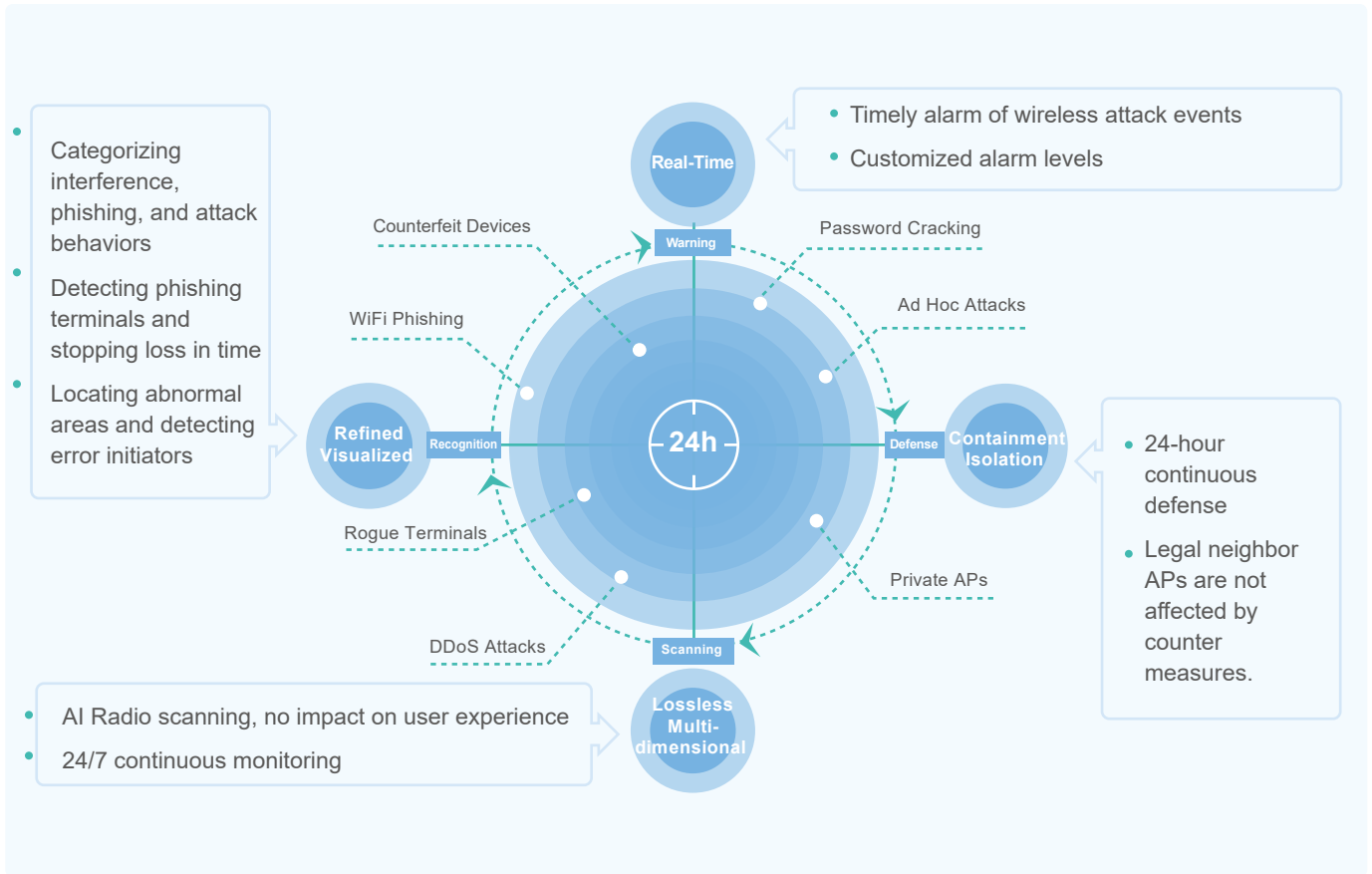
The roaming induction record of every terminal every time will be uploaded to the WIS for comparison and analysis before and after the induction, and the process can be visualized and continuous improvement can be achieved.

Optimization and Roaming

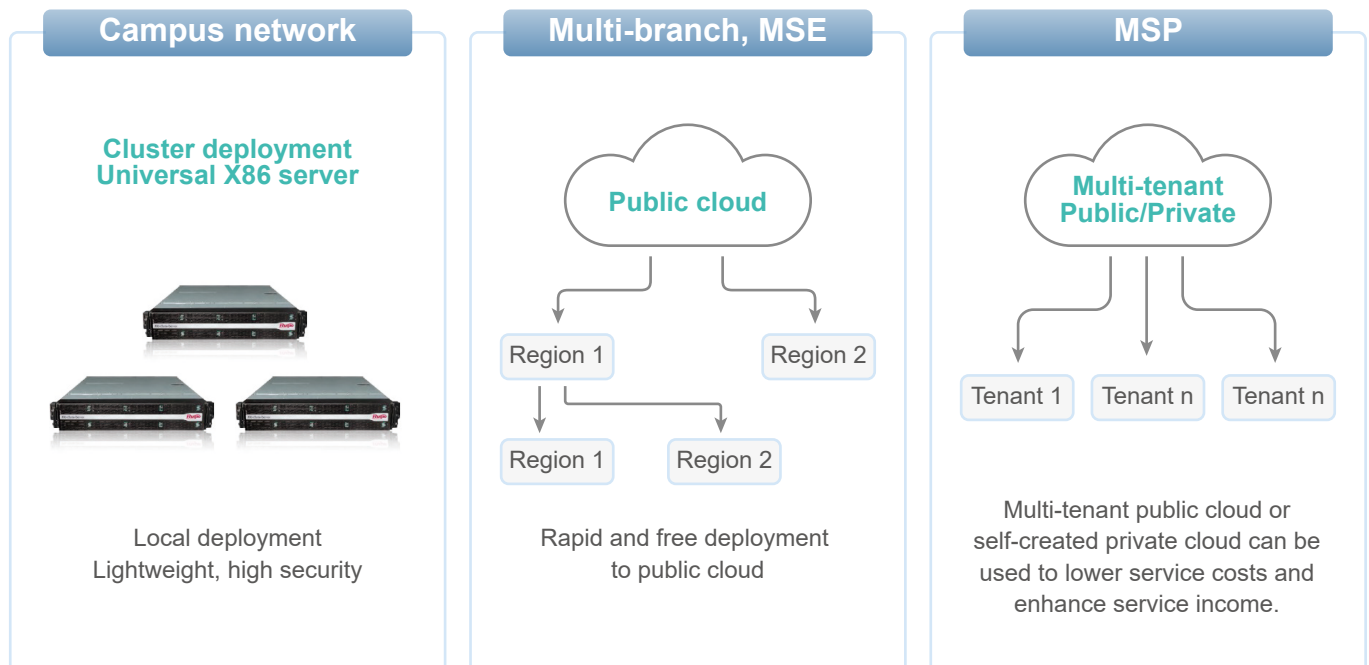
Inter-WAN access cloud platform



Network Security 24/7 Monitoring



Deployment Mode



Ruijie



Ruijie Networks Co., Ltd.

For further information, please visit our website <https://www.ruijienetworks.com/>

All rights are reserved by Ruijie Networks Co., Ltd. Ruijie reserves the right to change, modify, transfer, or otherwise revise this publication without notice, and the most current version of the publication shall be applicable.